

SET UP INSTRUCTIONS

CAMPSITE SELECTION AND SET-UP

After taking delivery of your new tent camper, take a short trip to a local campground. Practice pulling into a space and backing up. Take time to learn how to connect to the campground water and sewer, and how to operate the various elements of your camper.

Learn all you can about your new camper before taking it on an extended trip. Becoming familiar with all facets of your new camper will make your first camping experience more enjoyable.

SET-UP TIPS AND PRECAUTIONS

Before setting up your new camper, always keep the following tips and guidelines in mind:

1. Choose a campsite that is as level as possible from side to side. An uneven campsite can cause binding of the lifting system.
2. Be sure there are no low hanging branches or other obstructions that could interfere with moving the camper onto the site, raising the roof, or extending the bunks.
3. Check the placement of campsite electric utility outlets, keeping in mind the length of the camper's power cord.
4. Be sure to release all four roof latches before attempting to raise the roof.
5. To prevent movement, place blocks in front of or behind, the camper wheels.
6. Remove all items you may have stored on the roof, before attempting to raise it.
7. Be sure the awning, (if equipped), is attached to the camper before raising the roof.

ROCKWOOD TENT CAMPERS - LTD, FREEDOM, FREEDOM OFF ROAD, PREMIER, HIGH WALL

1. Once you have selected your campsite, make sure you position your camping trailer on level ground. Before starting the set up procedure, be sure that the battery is properly connected to power the unit if you plan on operating an elec-

tric lifter system or optional power tongue jack. (High Wall models only).



2. **FREEDOM Off Road only** To access the Off-Road front storage deck and install the loading ramp, remove the (6) locking safety pins from the steel deck rails. Remove the steel deck rails, and mount them on the side of the deck by inserting the bolts on the ramp end into the openings in the steel mesh deck. You are now ready to load your ATV.



When disassembling, remove the ramps; and return them to the "rail" position on the trailer. Then, insert the locking safety pins into all (6) locations.



INITIAL EXTERIOR SET-UP

3. Begin with inserting the dolly wheel onto the jack post (if desired) and locking into place. Disconnect the safety chains from the tow vehicle and unplug the electrical connection. Now crank the handle on the dolly jack and lower the jack post to the ground. A small wood block can be used to prevent the jack post or dolly wheel from sinking into the ground. Now release the coupler latching lever and raise the coupler free of the hitch ball with the dolly jack.

Move the tow vehicle away from the camper. Level the camper from front to rear by raising or lowering the dolly jack as required.

Next, set the stabilizer jacks with sand pads on all four corners of the camper. Simply crank down each jack to stabilize the camper.



Note: Keep hands and fingers away from the pinch points on the stabilizing jacks when extending or retracting. Be sure to return the jack handle to the storage compartment to ensure it will not be lost. After all stabilizers are set, release the four latches that hold the roof secure.



WARNING: The stabilizing jacks are for support only and are not intended as a means of leveling the camper. Attempting to use the jacks as leveling tools may result in damage to the lifter system.

4. If you plan to utilize the awning, unzip and roll out the awning at this point. Release the awning legs located on the front of the awning rail and place them on the ground. Now, extend both support arms located on the back of the awning rail, and place into the sockets on the roof sidewall. Continue to extend the support arms until the fabric is taut, and

twist to lock. Next, extend the legs to the top pin position on the pole.



5. It is now time to raise the roof. **For electric lift systems:** Once the roof latches are released, simply push the switch on the power winch to the "up" position to raise the roof. Keep an eye on the extender cable for indication that the roof is fully raised. To lower the roof, push the lever on the power winch to the "down" position. If necessary, the power winch is equipped with a manual override feature. To access the mount for the crank handle, remove the round plastic cap on the motor cover. Then insert the supplied jack handle and crank the handle to raise and lower the roof.



For manual lift systems: Once the roof latches are released insert the lifter crank handle in the crank shaft, and turn it clockwise to raise the roof. The Rockwood lifter system has an automatic brake. If the handle is released at any time...cranking up or down...the roof will hold its position. . Keep an eye on the extender cable for indication that the roof is fully raised.



1. The guide wire will tell you when the roof is extended to full height. Set the safety supports on the opposing corner lifter arms.



2. At this time, adjust the awning legs to the desired height. If you prefer, you can attach the awning legs to the sockets located on the sidewall. During periods of high precipitation, adjust the awning pitch to allow water to run off. It is recommended during heavy winds that the awning be closed.



3. **LTD models only:** Now, slide the bunk end out until it is fully extended. Then, remove the support poles from under the mattress. Inserting the round end into the frame, and using your shoulder for leverage, raise the bunk and insert the flattened end into the clip. Locking the bunk into position.



FREEDOM, FREEDOM Off Road, PREMIER and High Wall models: Now, remove the 'double' pole bed supports from under the mattress. The poles with the black cap are installed in the back of the camper, and the poles with the white cap are installed in the front. Install the poles by inserting the clip into the bracket at the top of the tent camper wall and into the bracket on the tent camper frame. Place the bottom pole into the appropriate slot to

ensure the top pole is level. Then slide the bunk end out until it is fully extended.



If there appears to be an obstruction preventing the bunks from sliding out, **DO NOT** proceed until the source of the interference has been found and corrected. Keep bed slides well lubricated with a type of clear Silicone spray.

4. Adjust the side bunk tent assembly by securing the fitted corners and extending the tent sides below the bunk. Repeat the bunk-end set up procedure on the other bunk end.



Rockwood uses water resistant, a 5 piece sectionalized tent with down facing interlock seams and is double stitched at all tension points. **See the Tent maintenance section of your owner's manual for more information on how to clean and maintain your tent for years of enjoyment.**

5. **FREEDOM, FREEDOM Off Road, PREMIER and High Wall models:** at this point, if your tent camper is equipped with Rockwood's E-Z Glide slide out dinette, there are a few additional steps you will need to do. Release the slide room by lifting the "lift and turn" latch, then turning to release the lock.



Take hold of the handle and pull out the slide room. Attach the cotter pins to the steel pins extruding from the sidewall at the seal. Similar to the bed ends, Rockwood attaches the tent material to the slide out, so simply attach the Velcro strips to both sides of the slide out.



INTERIOR SET-UP PROCEDURES

6. Before entering the camper, you may want to set-up the step(s) stored under the door opening by pulling it down into place.
7. If you have a “flip-over galley”, set the galley into position by flipping it up onto the cabinet (LTD and select models).



If you have a “swing level galley”, lift the galley into place by grabbing the handle and using an even swing motion.



8. Now, zip the tent corners and slide the locking pin into the bed rail to secure the bunk. To complete the bunk end setup, put the overhead support pole into the bed bow and push into place. Next, adjust the length of the pole until the bunk material

is stretched tight. Set the other bunk end pole into place and the bed ends are ready to use.



9. **FREEDOM, FREEDOM Off Road, PREMIER and High Wall models:** now, complete the slide out setup by attaching the slide out dinette rafter pole to the tent bow, and stretch the tent into position. Insert the end of the rafter pole in the metal clip, and adjust the tension.
10. **High Wall models only:** If your Rockwood High Wall Series is equipped with a “hard wall” shower, some additional set up is required. Lift the top shower wall section up and slide in into place. Lock the safety latch. Next, lift the bottom shower wall section up and slide out into place. Lock the safety latch.



To complete the setup, install the shower door by inserting the bottom lip into the locking brackets and the top tabs into the locks. Install the interior shower curtain and exterior privacy curtain. The “black and gray water” dump valves are located on the “off-door” side for waste removal.



Next, install the faucet spout stored inside the sink by screwing into place on the top of the sink. **Note:**

Remember to remove the faucet spout and store it back inside the sink when tearing down.

1. Remove the dinette cushions from the bed position, and place the table on its side or on the bed. If your camper has a free standing table, simply unfold the table legs, and lock into place. If your table is a pedestal table, install the leg(s) into the floor base and set the table into place. Now, position the seat cushions and supported back cushions on the bases.



2. **FREEDOM, FREEDOM Off Road, PREMIER and High Wall models:** Most Rockwood models feature the Fantastic Vent. This 12 volt, 3 speed fan is quiet, dissipates condensation, and exchanges the air in your tent camper allowing you to breathe natural ambient outside air.
3. **LTD models only:** To set the screen door, release the door by turning the two twist locks. As the door swings down, lift it up and align the tabs into the slots on top of the side-wall. (Picture) Then twist the retainers to secure the top of the door. Attach the two door sections together and release the retainer clip on the side of the door. Now, simply attach the tent to the screen door with the Velcro strip.



FREEDOM, FREEDOM Off Road, PREMIER and High Wall models: Before installing the door, you should first remove the travel door by lifting the door to release the hinge pins. Then, stow the door beneath the rear bunk, and secure it with the attached shock cord. Be sure to reinstall this

door before attempting to slide in the bunk during teardown.



To set the screen door, simply push the one piece door up and release the snaps on the side of the door. Allow the guide wires to support the door. Next, twist the retainer clip at the bottom of the door to release it from the travel position. Position yourself in the middle of the door. Lift it out of the travel position and guide the door outside the opening setting it onto the threshold. Twist the 6 retainer clips to hold the door secure. Then, attach the tenting to both sides of the door with the Velcro strips.



4. To provide power to your heated mattresses, simply plug in the power cord and controller provided into the outlet sewn into the side of the mattress and plug into a 110 volt outlet located on the walls near the bed ends.



5. **High Wall models only:** if you have the model HW296, you have a 20" LCD TV Monitor as stan-

ard equipment. To position the TV for viewing, release the lock and turn it into position.



6. For models with a ceiling mounted folding clothes hanger: to use, release the catch and rotate the bar down.
7. For models with a Gaucho (a sofa-like seating space): It can be converted to a bed by releasing the snap on the locking strap located on the gaucho base under the seat cushion next to the door and pulling the gaucho seat bottom forward, using the back cushions to complete the mattress.
8. Since the appliances in your Rockwood camper may vary according to floor plans and options, we suggest that you consult your dealer or owner's manuals included with your camper for operating and maintenance information.

RETURN TO THE OUTSIDE FOR FINAL SET-UP

9. Fasten the corner flap to the snap at the end of the Velcro strip on the underside of the bunk and attach the tent to the Velcro along the length of the bunk. A shock cord is also added for safety. Next, Velcro the lifter post covers in place for added protection against the elements and insects.



10. **LTD models only:** if you desire, you can remove the two-burner stove from inside the camper and install it onto the mounting bracket located on the side of the camper. To attach the stove to the exterior wall, be sure that the lip on the extrusion across the back of the stove fully locks into place on the extrusion mounted to the camper sidewall. Then, attach the LP gas line provided from the opening on the side of the camper to the stove. A quick

disconnect fitting on the stove is provided for this purpose. When connecting the stove to the LP gas supply, the LP valve on the disconnect fitting must be in the OFF position (valve handle at a right angle to the gas line). To attach the quick disconnect, hold the gas line, pull back on the outer connecting collar and insert over the stove connection. When connected, turn the gas valve to the ON position (valve handle in line with the gas line). Don't forget to remove the stove before closing up the camper.



FREEDOM, FREEDOM Off Road, PREMIER and High Wall models: To attach the grill, remove it from the box and assemble according to the manufacturer's instructions. Begin by installing the grill base on to the mounting bracket located on the side of the tent camper. To attach the grill base to the exterior wall, be sure that the lip on the extrusion across the back of the base fully locks into place on the extrusion mounted to the camper sidewall. Place the grill on the base and attach the LP gas line provided from the opening on the side of the camper to the grill. A quick disconnect fitting on the grill is provided for this purpose. When connecting the grill to the LP gas supply, the LP valve on the disconnect fitting must be in the OFF position (valve handle at a right angle to the gas line). To attach the quick disconnect, hold the gas line, pull back on the outer connecting collar and insert over the grill connection. When connected, turn the gas valve to the ON position (valve handle in line with the gas line.)



TENT CAMPER TAKE DOWN PROCEDURE

Taking down your camper is basically the reverse process you used to set it up. However, it is important to ensure that various systems and features are shut off and stored properly. In addition, it is critical to make sure that moisture and debris is not left to damage the camper's components while it is stored. To take down the camper, proceed as follows:

1. Don't forget to remove and store the stove top or grill before closing up the camper.
2. Unplug the power cord from the outside supply and store.
3. Disconnect the water hookups and store the hose.
4. **LTD, FEEDOM, FREEDOM Off Road:** Your camper is equipped with dome lights that have individual switches. It is important to always turn off all lights, the furnace and pilot lights prior to closing the trailer.
PREMIER, High Wall only: Your camper is equipped with a dome light main power switch. This switch must be in the "off" position before the camper is closed. It is also important to always turn off the furnace and any pilot lights prior to closing the trailer.
5. Check that all appliance switches are in the OFF position, heated mattresses are unplugged with controller stored, stove top covers are closed and the main LP valve is in the CLOSED position.
6. If your camper has a refrigerator, and contents require it, switch to 12 volt operation.
7. **High Wall models only:** if you have the model HW29SC, you have a 20" LCD TV Monitor as standard equipment. Remember to turn, lower and lock the TV for storage.
8. **LTD models only:** store the inside/outside stove top in the storage position provided on the dinette seat base.
9. Place the dinette table and cushions (and any other table, gaucho cushion, etc.) in their stored position.
10. **High Wall models only:** If your Rockwood High Wall Series is equipped with a "hard wall" shower, uninstall the interior shower curtain and exterior privacy curtain. Remove the shower door by releasing the top tabs from the locks and by lifting the bottom lip from the locking brackets. Store the shower door on the dinette. Next, unlock the safety latches connecting the upper walls to the lower

walls of the shower. Now, slide in and lower the right wall and then the left wall.

11. Unzip the tent at each corner and slide the locking pin from the bed rail to release the bunk.
12. Close the roof vent or fan. Make sure no debris is lodged under the cap that could damage the screen or mechanism. If your camper is equipped with the Fantastic Vent, it is important to always secure the vent cover with the lock on the inside.
13. For models with a ceiling mounted folding clothes hanger: Remove clothing and hangers from the bar and fold the bar back into its flush mounted ceiling position.
14. Unfasten the tent from the Velcro at the door and remove the tent from around the door frame.
15. **LTD models only:** Lock the combination storm/screen door to the door frame, lift the entire door off the lower door and swing it up to the stored position. Fasten it to the roof with the two retaining locks.
FREEDOM, FREEDOM Off Road, PREMIER and High Wall models: lock the combination storm/screen door to the one piece door frame, release the six retainer clips to release the door, position yourself in the middle of the door and lift the entire door swinging it to the stored position using the guide wires for support. Place the bottom of the door in the storage bracket above the door opening, twist the retainer clip and then fasten the snaps on the side of the door at the top.
16. Then, retrieve the travel door from beneath the rear bunk and reinstall it in the entry door opening.
17. Be sure that all interior cabinets, wardrobe, pantry, etc., have been lowered or placed in their travel positions.
18. Be sure all windows are zipped and curtains are closed as required to avoid damage when closing the bunks.
19. Remove the center support poles from both bunks roof bows and store them under the mattresses. Then, lower the roof bows onto the mattresses.
20. Next, remove the center support poles from the dinette slide roof bow and store it under the seat cushion. Then, lower the roof bow onto the dinette cushions.
21. If you have a "flip-over galley", lower the galley by flipping it over from the cabinet into storage position (LTD and select models). If you have a "swing

level galley”, lower the galley into the storage position by grabbing the handle and using an even swing motion.

22. **Remove the faucet spout and store it back inside the sink.**
23. **FREEDOM, FREEDOM Off Road, PREMIER and High Wall models:** if your tent camper is equipped with Rockwood's E-Z Glide slide out dinette, detach the tent material from the Velcro strips on both sides of the slide out. Remove the cotter pins from the steel pins extruding from the sidewall at the seal. Take hold of the handle and push in the slide room. **Note: make sure the path is clear inside the camper. Secure the slide room by turning and closing the “lift and turn” latch to engage the lock.**



⚠ WARNING

WARNING: WHEN CLOSING UP THE DINETTE OR CAMPER IN GENERAL, BE SURE TO PULL OUT THE TENT FABRIC AND CLEAR OUT OF THE SLIDE RAIL PATH BEFORE PUSHING IN THE BED.

24. Close the entry door step into its stored position.
25. Release the Velcro strips securing the tent material around the roof support poles.
26. Remove both lifter pole safety supports.
27. Detach the shock cord, tent flap Velcro and snap under the bunk and lift the tent up onto the bunks.
28. Be sure the tent is pushed back and away from the edge of the bunks.
29. **LTD models only:** Raise each bunk a few inches with your legs and shoulder, and then remove the bed support poles from the support sockets. Store the support poles in a convenient location such as under the bunk mattresses. Next, push both bunks into their travel positions.

30. **FREEDOM, FREEDOM Off Road, PREMIER and High Wall models:** push both bunks into their travel positions. Next remove the “double” pole bed supports from the brackets. Store the support poles in a convenient location such as under the bunk mattresses.

NOTE: BE SURE THAT THE TENT DOES NOT CATCH OR BIND WHEN PUSHING IN THE BUNKS.

31. Release the stabilizer jacks and raise them into their storage position.
32. **LTD and FREEDOM models:** insert the lifting mechanism cranking lever into the winch adapter and lower the roof by turning counter clockwise until the roof stops. **DO NOT OVER CRANK.** The roof can be fully retracted and still be 1 to 2 inches above the side walls. Do not continue to turn the cranking lever or damage to the lifter system will result.
33. For electric lift systems: to lower the roof, simply push the lever on the power winch to the “down” position. **DO NOT OVER CRANK.** The roof can be fully retracted and still be 1 to 2 inches above the side walls. Do not continue to push the lever or damage to the lifter system will result.
Note: When lowering the roof, make sure that the tent is kept clear of the lifter posts when the roof is lowered.
34. Store the awning when the roof is fully lowered.
35. Fasten the roof latches at each corner. It may be necessary to push down slightly on the roof at each corner to completely close the roof section and allow the latches to close.
36. Hitch the camper to your tow vehicle.

ROCKWOOD FOLDING CAMPER - HARD SIDE

1. Once you have selected your campsite, make sure you position your camping trailer on level ground. Before starting the set up procedure, be sure that the battery is properly connected to power the unit if you plan on operating the optional power tongue jack.



INITIAL EXTERIOR SET UP:

1. Begin with inserting the dolly wheel onto the jack post (if desired) and locking into place. Disconnect the safety chains from the tow vehicle and unplug the electrical connection. Now crank the handle on the dolly jack and lower the jack post to the ground. A small wood block can be used to prevent the jack post or dolly wheel from sinking into the ground. Now release the coupler latching lever and raise the coupler free of the hitch ball with the dolly jack. Move the tow vehicle away from the camper. Level the camper from front to rear by raising or lowering the dolly jack as required.

Next, set the stabilizer jacks with sand pads on all four corners of the camper. Simply crank down each jack to stabilize the camper.



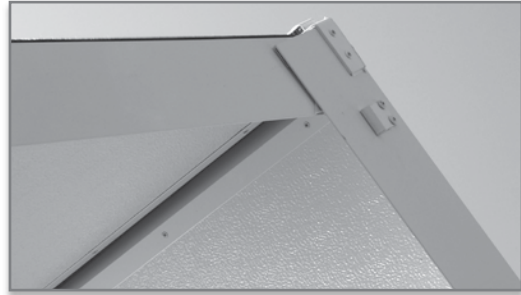
Note: Keep hands and fingers away from the pinch points on the stabilizing jacks when extending or retracting. Be sure to return the jack handle to the storage compartment to ensure it will not be lost. After all stabilizers are set, release the two latches that hold the roof secure.



⚠ WARNING

WARNING: THE STABILIZING JACKS ARE FOR SUPPORT ONLY AND ARE NOT INTENDED AS A MEANS OF LEVELING THE CAMPER. ATTEMPTING TO USE THE JACKS AS LEVELING TOOLS MAY RESULT IN DAMAGE TO THE LIFTER SYSTEM.

2. **AT THIS TIME, REFER TO THE OPTIONAL A-FRAME AWNING/SCREEN ROOM SET UP INSTRUCTIONS AT THE END OF THIS SECTION, IF YOU PURCHASED THIS OPTION.**
3. It's now time to raise the roof. Lift the handle on the left roof section with a smooth firm action to raise both roof sections. Lift until the left roof section locks securely into the groove at the top of the right roof section.



INTERIOR SET-UP PROCEDURES

4. Open the lower section of the door. Enter into the camper while opening and holding the upper section of the door. Close the lower door section.



5. Raise the door side wall by lifting at the top of the upper door opening. Continuing to hold the upper door section open, until the wall is upright.



While applying outward pressure on the wall directly below, secure the left side latch at the top of the wall into the plate mounted on the ceiling.



6. Lift to set the off door side wall until up right.



7. Secure both the latches as done previously. Then, secure the other door side latch using the same procedure.



8. Attach the door sections by securing the latch mounted to the lower door section to the catch mounted to the upper section.



9. Remove the dinette cushions from the bed position, and place the table on its side or on the bed. In most models, Rockwood uses a free standing table so it

can be utilized both inside and outside the camper. Simply unfold the table legs and lock into place.



If your model has a floor mounted table base, install the pedestal legs into the floor pedestal, and set the table into place.

10. Next, position the seat cushions and supported back cushions on the bases.



11. Most Rockwood models feature the Fantastic Vent. This 12 volt, 3 speed fan is quiet, dissipates condensation, and exchanges the air in your tent camper allowing you to breathe natural ambient outside air. **Note: It is important to always secure the vent cover with the lock on the inside before closing for travel.**

12. If you have the Model A122 or A122BH, your Rockwood has been equipped with standard heated mattresses that generate a warm, gentle, soothing heat for those chilly nights. To provide power to your heated mattresses, simply plug in the power cord and controller provided into the outlet sewn into the side of the mattress and plug into a 110 volt outlet located on the walls near the bed ends.

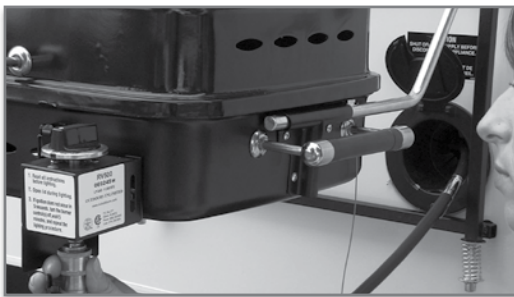


13. Since the appliances in your Rockwood camper may vary according to floor plans and options, we

suggest that you consult your dealer / or owner's manuals included with your camper for operating and maintenance information.

RETURN TO THE OUTSIDE FOR FINAL SET-UP

1. To attach the grill, remove it from the box and assemble according to the manufacturer's instructions. Begin by installing the grill base on to the mounting bracket located on the side of the tent camper. To attach the grill base to the exterior wall, be sure that the lip on the extrusion across the back of the base fully locks into place on the extrusion mounted to the camper sidewall. Place the grill on the base and attach the LP gas line provided from the opening on the side of the camper to the grill. A quick disconnect fitting on the grill is provided for this purpose. When connecting the grill to the LP gas supply, the LP valve on the disconnect fitting must be in the OFF position (valve handle at a right angle to the gas line). To attach the quick disconnect, hold the gas line, pull back on the outer connecting collar and insert over the grill connection. When connected, turn the gas valve to the ON position (valve handle in line with the gas line). Don't forget to remove the grill before closing up the camper.



CLOSING INSTRUCTIONS

2. At this time, refer to the optional A-frame Awning/Screen Room closing instructions at the end of this section, for disassembly instructions if you purchased this option.

⚠ WARNING

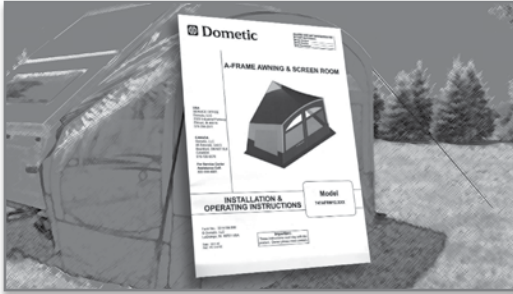
THE ROCKWOOD HARD SIDE CAMPING TRAILER MUST BE IN THE CLOSED POSITION TO TOW.



3. Begin closing the camper. Start with disconnecting the door sections by releasing the latch mounted to the lower door section from the catch mounted to the upper section.
4. Next, release the latch on the right at the top of the door side wall from the plate mounted on the ceiling. Then release the two latches at the top of the off door side wall from the plates mounted on the ceiling. Lower the off door side wall until down flat.
5. Now, release the latch on the left at the top of the door side wall from the plates mounted on the ceiling. With the upper section of the door open, step into the door opening of the wall. While holding the upper section of the door, lower the door side wall gently until down flat.
6. Open the lower door section, and exit the camper. Close the upper section of the door and then close the lower section.
7. Lift the handle on the right roof section up with firm action, holding it up until the left roof section disengages from the groove on the right roof section.
8. Now, fasten the safety latches on both sides to the top roof section and raise the (4) stabilizer jacks up to the closed position.

A-FRAME AWNING/SCREEN ROOM INSTRUCTIONS

Note: For complete detailed installation and operating instruction, refer to the Dometic A-Frame Awning & Screen Room Manual provided.



QUICK SET UP INSTRUCTIONS

1. If you have purchased the optional A-Frame Awning and Screen Room and plan to utilize it at this time, remove it from the storage bag to begin installation.



2. Separate the fabric from the aluminum support poles and stakes.



3. Before beginning the installation of the fabric, remove the front panel of the awning/screen room.



4. Open the lower section of the door and enter. Raise the door side wall by lifting at the top of the upper door opening while continuing to hold the upper door section open, until the wall is upright.



While applying outward pressure on the wall directly below, secure the left side latch at the top of the wall into the plate mounted on the ceiling.

Lift to set the off door side wall until up right.



Secure both the latches.



5. Now, release the door side latch and lower the door side wall while you position yourself near the off door wall to the side of the closed wall.



On the door sidewall, install the Velcro tape along the top inside edge of the wall,

1. Install the A-Frame Awning Screen Room fabric to the Velcro tape along the top inside edge of the door side wall. **These initial steps will only be completed during the first time set up.**

Return outside the camper to complete the remaining steps of the awning and screen room set up.

2. Install Velcro to the outside edge of the front and rear wall and along the bottom outside edge of the lower wall to attach the skirting later.



3. When raising the door side wall, be sure the A-Frame Awning Screen Room fabric is positioned outside the wall and properly positioned under the roof edge.



4. Assemble the aluminum poles and insert them into proper position through the sleeves sewn into the fabric. Be sure that the poles are properly secured into the mounting brackets attached to the fabric.



5. Now, attach the mesh skirting to the Velcro tape installed previously along the bottom outside edge of the lower wall.



6. Complete by securing the fabric to the ground with the stakes provided.



7. To convert the A-Frame Awning as a Screen Room, simply zip on the front panel.



QUICK DISASSEMBLY PROCEDURE

8. When closing your camper, you must first complete the disassembly procedure. Begin by pulling up all stakes, and disassembling the support poles and removing the front screen room panel, if attached.
9. Once the sidewalls are lowered, it is important to position the attached material on to the off door side wall to allow the roof to close properly.



10. Return all other awning/screen room parts to the storage bag to ensure all are available for use during the next camping trip.

CAUTION

CAUTION: IT IS IMPORTANT TO ALLOW A WET TENT TO DRY COMPLETELY BEFORE BREAKING CAMP. IF YOU MUST LEAVE SOON AFTER A RAIN STORM, OR JUST AFTER DAWN, PROTECT ALL CUSHIONS AND DRAPES FROM DAMPNESS, MOLD AND MILDEW THAT CAN FORM INSIDE THE CAMPER, WHEN FABRICS OR SURFACES ARE STORED DAMP. IF DAMPNESS DOES OCCUR, SET THE CAMPER UP AS SOON AS POSSIBLE, AND ALLOW IT TO DRY THOROUGHLY.